

印中力

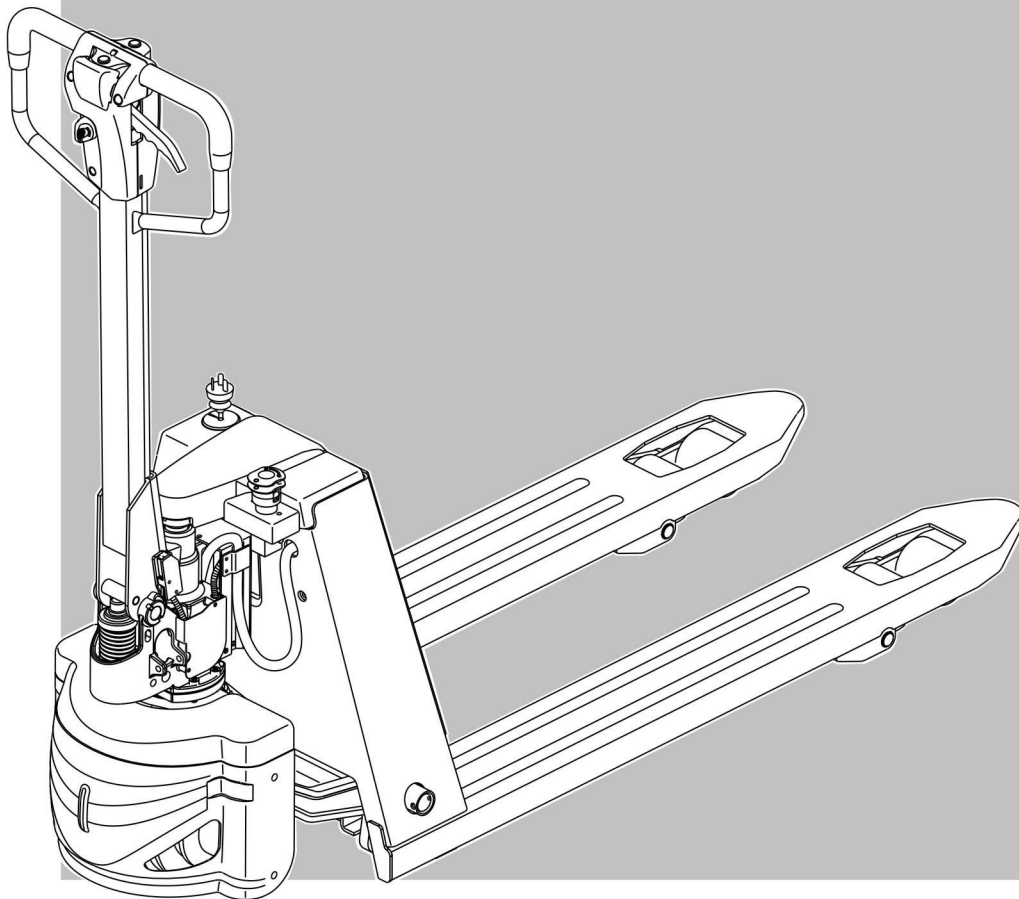
EPT18-EHJ

Semi-electric Pallet Truck

半电动搬运车

Parts Manual

零件目录



CE

CE CERTIFICATE

PARTS ORDERING INSTRUCTIONS

HOW TO ORDER

When you order, supply the part number, quantity, model and serial numbers of your machine. Supplying this information will assure prompt, efficient handling of your order.

Since your dealer carries many parts in stock and maintains up-to-date prices on all parts, he will be able to process your order immediately. If, for some reason, the part is not in stock, he will order it from the factory. In either event, he maintains a current file of service manuals, which give all available parts ordering or technical information.

WHERE TO ORDER

Always order parts from the dealer who sold you your truck. If it is necessary for the dealer to order parts from the factory, he is able to get prompt service for you. Parts are shipped in accordance with shipping instructions given on the order.

INSTRUCTIONS FOR RETURNING PARTS

Under NO CIRCUMSTANCES will parts be accepted at the factory for credit without prior approval . We cannot accept responsibility for parts returned without authorization.

If you have some parts which must be returned, contact your dealer. If he believes parts should be returned, he will arrange for authorization to return the parts.

CHANGES

When changes are made to the machine, revised pages for this manual will be issued. These pages must be inserted in your parts manual as soon as they are received. Failure to keep your parts manuals up to date will result in confusion and may cause you to order wrong parts.

EP EQUIPMENT CO.,LTD.

Address: XIAQUAN,DIPU,ANJI,ZHEJIANG,CHINA

Tel:400-880-2178

Net:www.ep-ep.com

Email:epparts@ep-ep.com

ALL RIGHT RESERVED COPYRIGHT

PM1122E 07.19

零件订购说明

如何订购

当您订购的时候，您需要提供搬运车零件的编号，数量，型号和序列号。提供这些信息能够保证您的订购更加的高效。

因为您的经销商有很多零件的存货，而且需要保持所有零件的价格是最新的，所以他会尽快地处理您的订购需求。假如因为某些原因，存货中没有这个零件，那么他会从公司订货。无论怎么样的情况，他手里都会有一份服务手册文件，它能提供所有可用的零件的订购信息或者技术信息。

订购地点

当您需要订购零件时，请到销售给您搬运车的经销商那里订购。如果经销商有必要从公司订购零件，他能为您提供快捷的服务。根据您的订购信息，零件和它对应的操作说明会一起装好。

零件的退还说明

一般情况下，因为信用的关系，退还的零件没有事先的同意，是不会被公司认可的。我们不会对没有经过授权但退还过来的零件负责。

如果您有一些零件一定要退还，请联系您的经销商。若经销商确认零件可以退还，则其会安排授权要退还的零件。

技术修改

当搬运车技术有修改时，这本手册的修正页会重新发行。当您拿到这些修正页时，您一定要立即把它们插入到您的零件手册中。若没有及时的更新您的零件手册，则可能会导致您订购、维护等方面的错误。

浙江中力机械有限公司

地址：浙江省安吉县递铺镇霞泉村中力园区

电话：400-880-2178

网址：www.ep-ep.com

邮箱：epparts@ep-ep.com

版权归本公司所有

PM1122E 07.19

GENERAL INFORMATION

INDEX

This parts manual is arranged for easy identification of parts .The index at the front of the catalog gives location of major groups and assemblies.

PART LIST

The **Index**, describes the item on the Figure you are looking at. The **Part No.** is a numerical description of the item and the part ordering number. The **Part Name** is a description of the part number in alphabetical form. The **No.** is the quantity used on the machine.The **Applied Date** is a description when the part is applicable.The **Remark** is the explanation of the part for a supplement,such as the model,the capability, the characteristic,etc.

HOW TO READ PARTS MANUAL

HELP 1:

	Index	Part No.	Part Name	No.	Applied Date	Remark
	序号	零件编号	零件名称	数量	适用日期	备注
A	18	0000-000667-00	Bearing 61905Z	轴承	1	
	19	1115-200004-00	Helical Gear	大斜齿	1	
		1115-200005-00	Helical Gear	小斜齿	1	
	20	0000-000680-00	Bearing 16003Z	轴承	1	
B	22	2108-540000-00	Bracket	电瓶固定板	1	
	23	1115-500005-00-01	Battery	电瓶	2	65AH / 12V
	23	1115-500005-00-02	Battery	电瓶	2	85AH / 12V
	24	0000-000378-00	Screw M4×16	螺钉	2	
C	8	ck11-560003-00	JC100 Switch	拇指开关	1	
	9	01 ck11-520008-00	JC100 Switch Wire Harness	JC100 线束	1	Cancelled/取消
		02 ck11-520008-0A	JC100 Switch Wire Harness	JC100 线束	1	
	10	0000-000001-00	Screw M6×20	螺钉	2	

A: The part of Index 19 is a discreteness with two kings of parts.It denotes **Not Sold Separately**.

B: The part of Index 23 is **Optional**.

C: The part of index 9 is improved and upgraded. Please use the **New Part Number** when ordering.

D: The part of Index 7 has an **Applicability**,because it's our policy to constantly improve our products.

The part of Index 11 is same ,but the Part Number is changed.And please use the new Part Number when you order this part.

	Index	Part No.	Part Name	No.	Applied Date	Remark
	序号	零件编号	零件名称	数量	适用日期	备注
D	7	01 2125-410004-00	Cap	导向套	1	-071011
		02 2125-410004-0A	Cap	导向套	1	071011-
	8	0000-000084-00	Ring Wiper 35×43×5-6.5	防尘圈	1	
	9	0000-000370-00	O-ring 40×3.1	O型密封圈	1	
	10	2125-410005-00	Ring Back Up 50×45×20	支撑环	1	
	11	01 0000-000197-00	Rod Packing 40×50×6	Yx 密封圈	1	Old
		02 0000-000512-00	Rod Packing 40×50×6	Yx 密封圈	1	New

1. Record by time

- 070911 : Ending on July 09, 2011.
- 071011- : Beginning on July 10, 2011.

2. Record by serial number

Index	Part No.	Part Name	No.	Applied Date	Remark
序号	零件编号	零件名称	数量	适用日期	备注
7	01 2125-410004-00	Cap	1	-S2016344	
02	2125-410004-0A	Cap	1	S2016345-	
8	0000-000084-00	Ring Wiper 35×43×5-6.5	1		
9	0000-000370-00	O-ring 40×3.1	1		
10	2125-410005-00	Ring Back Up 50×45×20	1		
11	01 0000-000197-00	Rod Packing 40×50×6	1		Old
02	0000-000512-00	Rod Packing 40×50×6	1		New

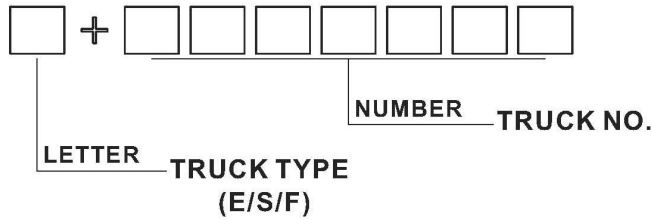
D ⇨

- S2016344 : Ending at S2016344
- S2016345- : Starting at S2016345

There are three types of serial number:

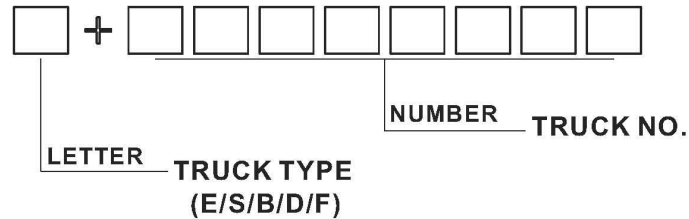
1) 1 (LETTER)+ 7 (NUMBERS)

Applied Date: Up to February 1,2015



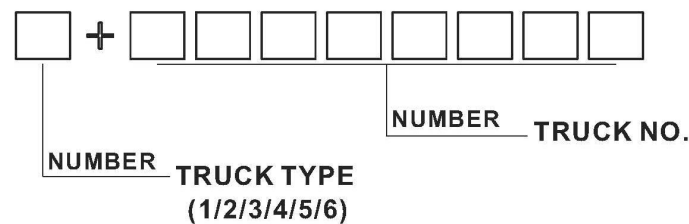
2) 1 (LETTER)+ 8 (NUMBERS)

Applied Date: From February 1,2015 to June 1,2015

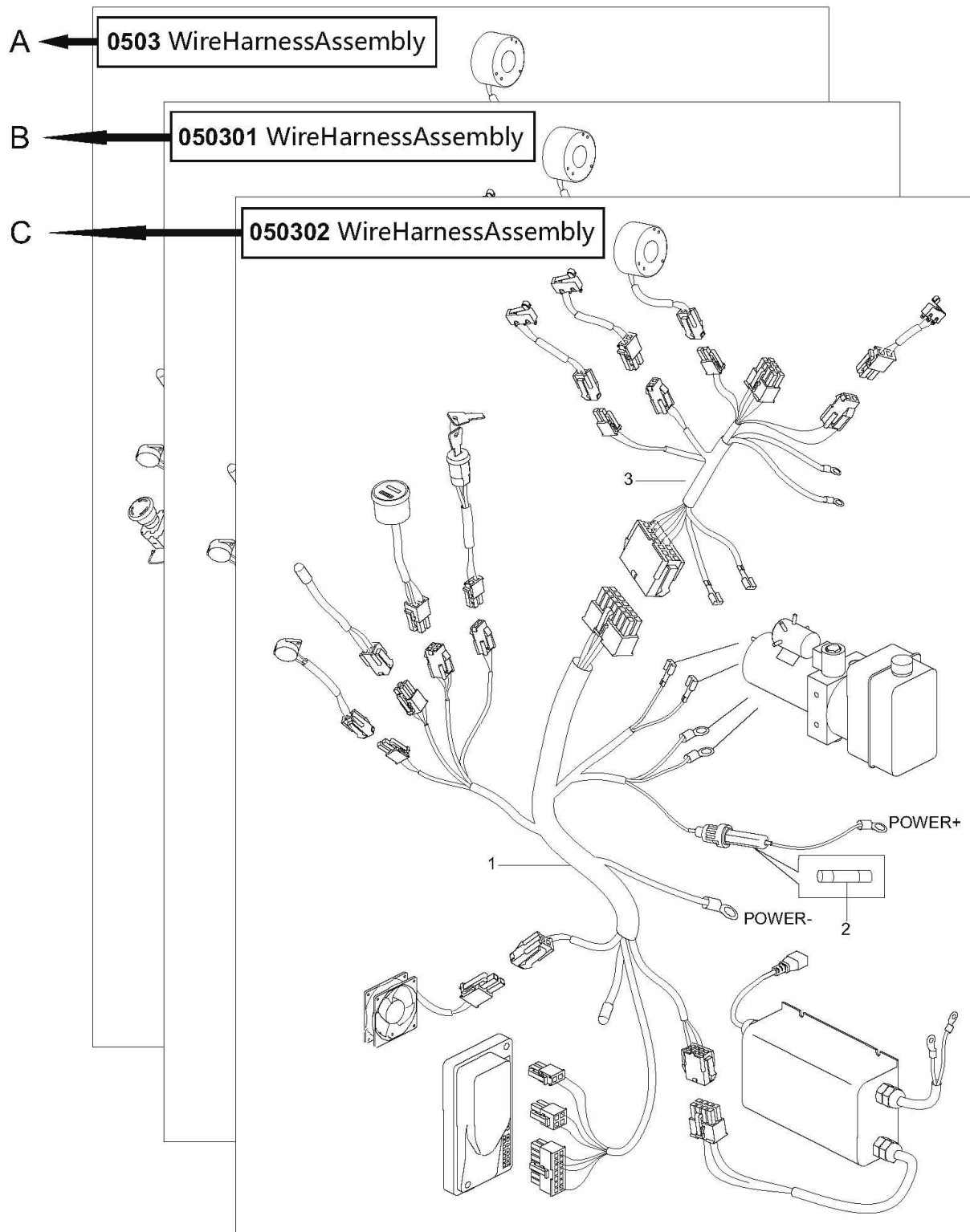


3) 1 (NUMBER)+ 8 (NUMBERS)

Applied Date: From June 1,2015



HELP 2:



A: Section 0503 is the original version.

B: Section 050301 is the version that some parts in the Section 0503 have been changed.

C: Section 050302 is the version that some parts in the Section 050301 have been changed.

When you order, Please locate specific parts information of your truck by the Applied Date of parts in each version.

概要

目录

将零件目录分组成几个易识别的部分，并把主要结构和总成放置在索引目录中。

零件明细表

Index 描述的是在插图上，您想要找的项目。**Part No.**是零件的一系列描述和它的订购号码。**Part Name**是用文字的形式描述零件的号码。**No.**代表的是零件在搬运车上使用的数量。**Applied Date** 表示的是零件适用的时间范围。**Remark** 是用来补充说明零件信息(例如车型、性能和特征等)。

怎么读取零件明目录

帮助 1:

	Index 序号	Part No. 零件编号	Part Name 零件名称	No. 数量	Applied Date 适用日期	Remark 备注
A	18	0000-000667-00	Bearing 61905Z	1		
	19	1115-200004-00	Helical Gear	1		
		1115-200005-00	Helical Gear	1		
	20	0000-000680-00	Bearing 16003Z	1		
B	22	2108-540000-00	Bracket	1		
	23	1115-500005-00-01	Battery	2		65AH / 12V
	23	1115-500005-00-02	Battery	2		85AH / 12V
	24	0000-000378-00	Screw M4×16	2		
C	8	ck11-560003-00	JC100 Switch	1		
	9	01 ck11-520008-00	JC100 Switch Wire Harness	1		Cancelled/取消
		02 ck11-520008-0A	JC100 Switch Wire Harness	1		
	10	0000-000001-00	Screw M6×20	2		

A: 序号 19 表示的是一个由两种零件组成的组件，不以单件形式出售。

B: 序号 23 表示该零件有几个品种可供您的选择。

C: 序号 9 表示该零件进行了改进和升级，订购时请使用新的零件编码。

D: 序号 7 表示该零件有一个适用的时间范围。这是因为我们在不断地进行产品的升级。

序号 11 表示的都是同一种零件，只是零件编码有所变更。因此，当您订购这类零件时，请您使用新的零件编码。

	Index 序号	Part No. 零件编号	Part Name 零件名称	No. 数量	Applied Date 适用日期	Remark 备注
D	7	01 2125-410004-00	Cap	1	-071011	
		02 2125-410004-0A	Cap	1	071011-	
	8	0000-000084-00	Ring Wiper 35×43×5-6.5	1		
	9	0000-000370-00	O-ring 40×3.1	1		
	10	2125-410005-00	Ring Back Up 50×45×20	1		
	11	01 0000-000197-00	Rod Packing 40×50×6	1		Old
	02 0000-000512-00	Rod Packing 40×50×6	1		New	

1. 用时间记录

- 070911 : 截止到 2011 年 7 月 09 日

071011- : 起始于 2011 年 7 月 10 日

2. 用序列号记录

Index 序号	Part No. 零件编号	Part Name 零件名称	No. 数量	Applied Date 适用日期	Remark 备注
7	01 2125-410004-00	Cap	1	-S2016344	
02	2125-410004-0A	Cap	1	S2016345-	
8	0000-000084-00	Ring Wiper 35×43×5-6.5	1		
9	0000-000370-00	O-ring 40×3.1	1		
10	2125-410005-00	Ring Back Up 50×45×20	1		
11	01 0000-000197-00	Rod Packing 40×50×6	1		Old
02	0000-000512-00	Rod Packing 40×50×6	1		New

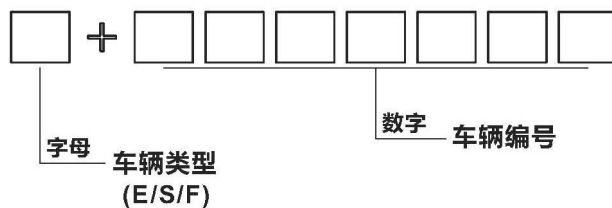
-S2016344 : 截止序列号 S2016344

S2016345- : 起始序列号 S2016345

有三种序列号形式:

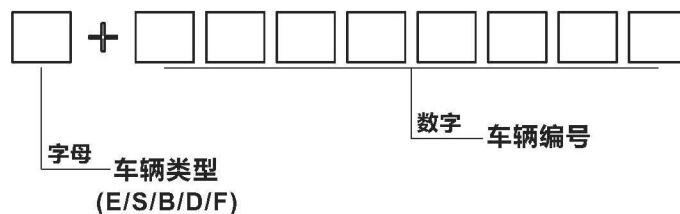
1) 1 (字母) + 7 (数字)

适用时间: 截止到 2015 年 2 月 1 日



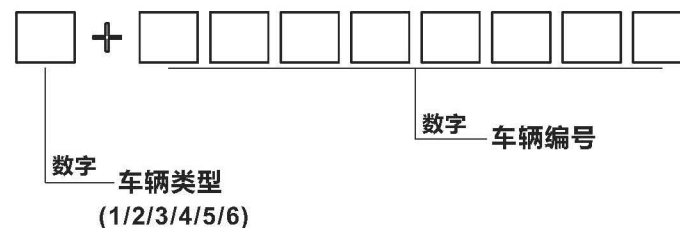
2) 1 (字母) + 8 (数字)

适用时间: 2015 年 2 月 1 日至 2015 年 6 月 1 日

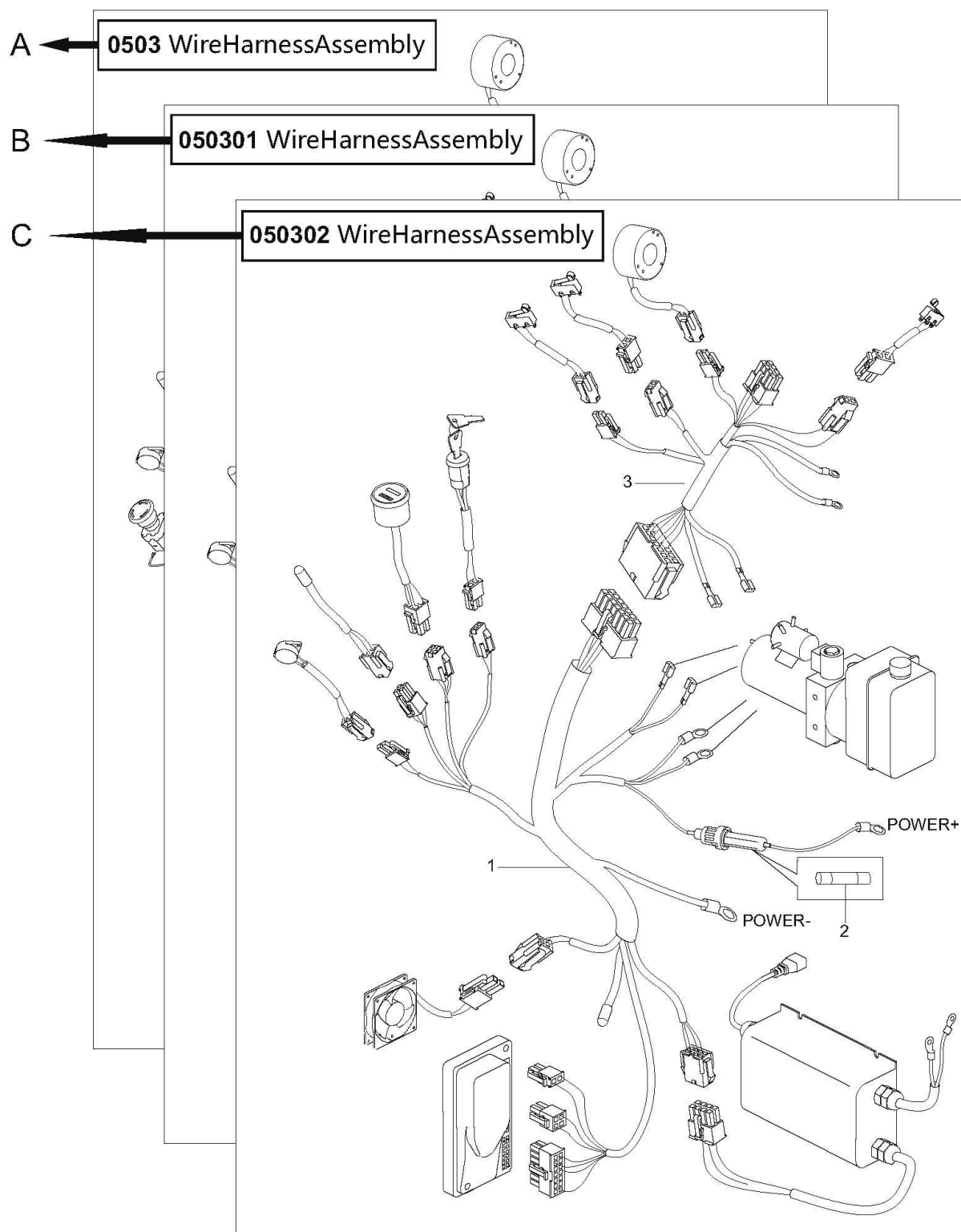


3) 1 (数字) + 8 (数字)

适用时间: 2015 年 6 月 1 日至今



帮助 2:



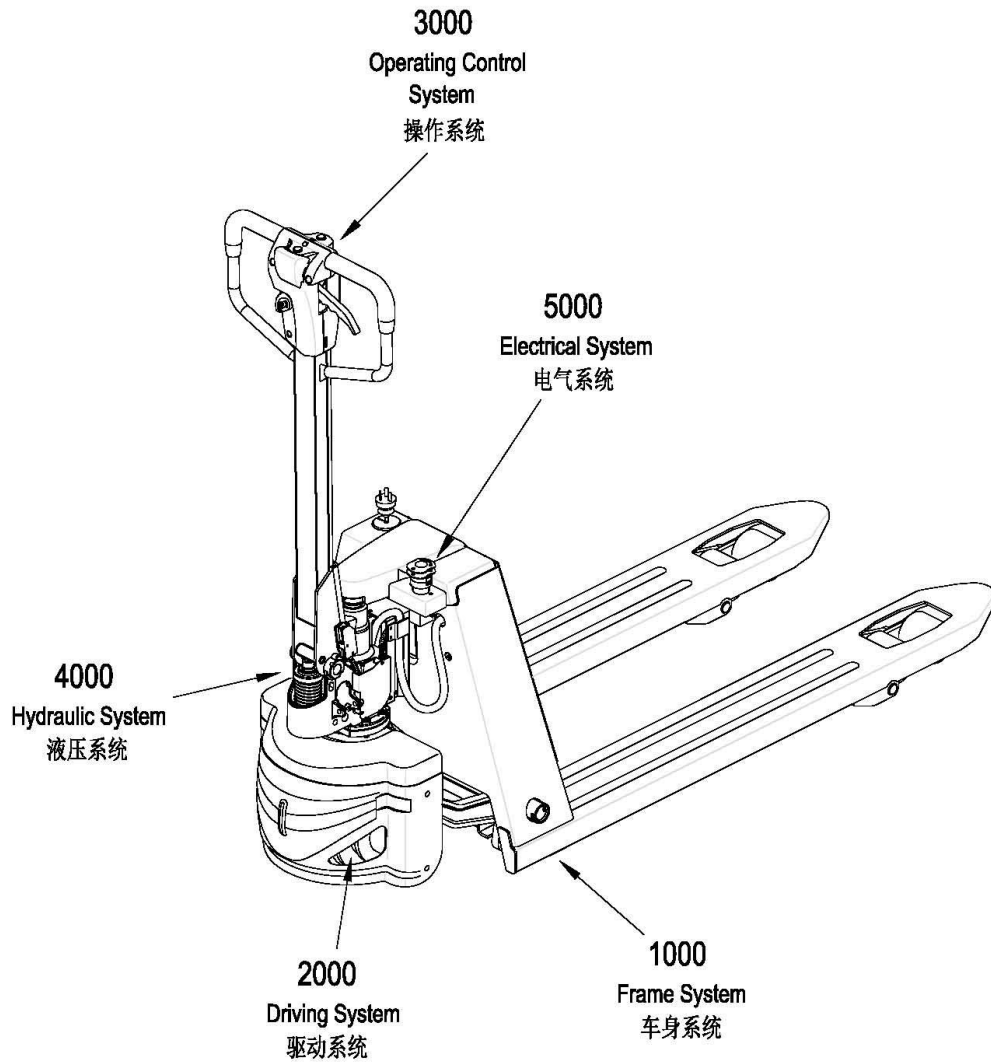
A: 章节 0503 表示原始版本;

B: 章节 050301 表示在原始版本 (章节 0503) 上零件有所变更;

C: 章节 050302 表示在变更版本 (章节 050301) 上零件有所变更。

当您订购零件时, 请根据每个版本中零件的适用时间来判断您所选购车型的零件信息。

Major Assemblies



WARNING: Note that illustrations of assemblies and components may not necessarily conform to the exact installation as they appear on your truck. But this Manual can help you locate specific parts information of your truck.

注意: 表达在零件目录上的总成和结构内容可能不会完全地出现在您的车型上，但是您可以在零件目录中查询到您所选购车型的零件信息。

Index 目录

1000Frame System 车身系统

0101 Frame System (Double Wheel) 车身系统 (双轮)	3
0102 Frame System (Single Wheel) 车身系统 (单轮)	5
0103 Connecting Link (Double Wheel) 连杆总成 (双轮)	7
0104 Connecting Link (Single Wheel) 连杆总成 (单轮)	9
0105 Load Wheel (Double Wheel) 承载轮 (双轮)	11
0106 Load Wheel (Single Wheel) 承载轮 (单轮)	13
0107 Cover Assembly 外罩总成.....	15

2000Driving System 驱动系统

0201 Driving System 驱动系统.....	19
-------------------------------	----

3000Operating Control System 操作系统

0301 Operating Control System 操作系统.....	28
0302 Control Pod Assembly 操作手柄头总成.....	30

4000Hydraulic System 液压系统

0401 Hydraulic System 液压系统.....	33
---------------------------------	----

5000Electrical System 电气系统

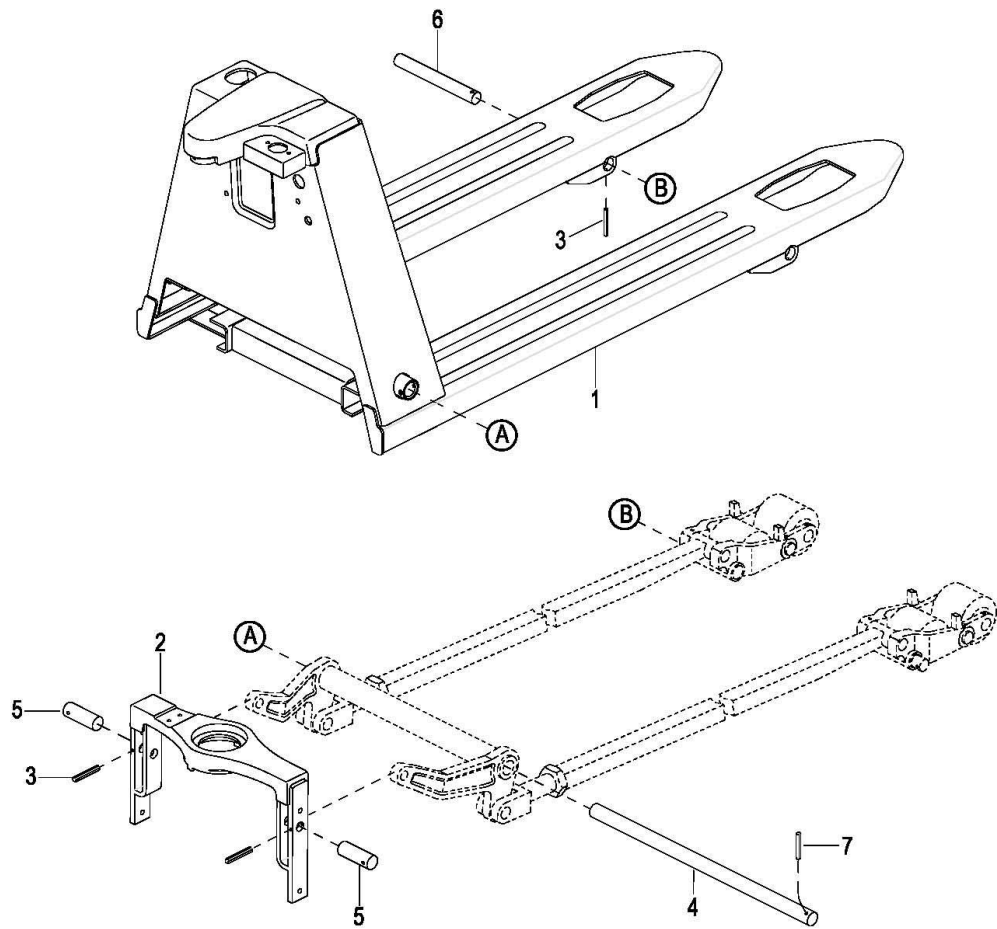
0501 Electrical System 电气系统.....	36
0502 Wire Harness Assembly 线束总成.....	38
0503 Cable Assembly 电缆总成.....	40

1000

Frame System

车身系统

0101 Frame System (Double Wheel)



0101 Frame System (Double Wheel)

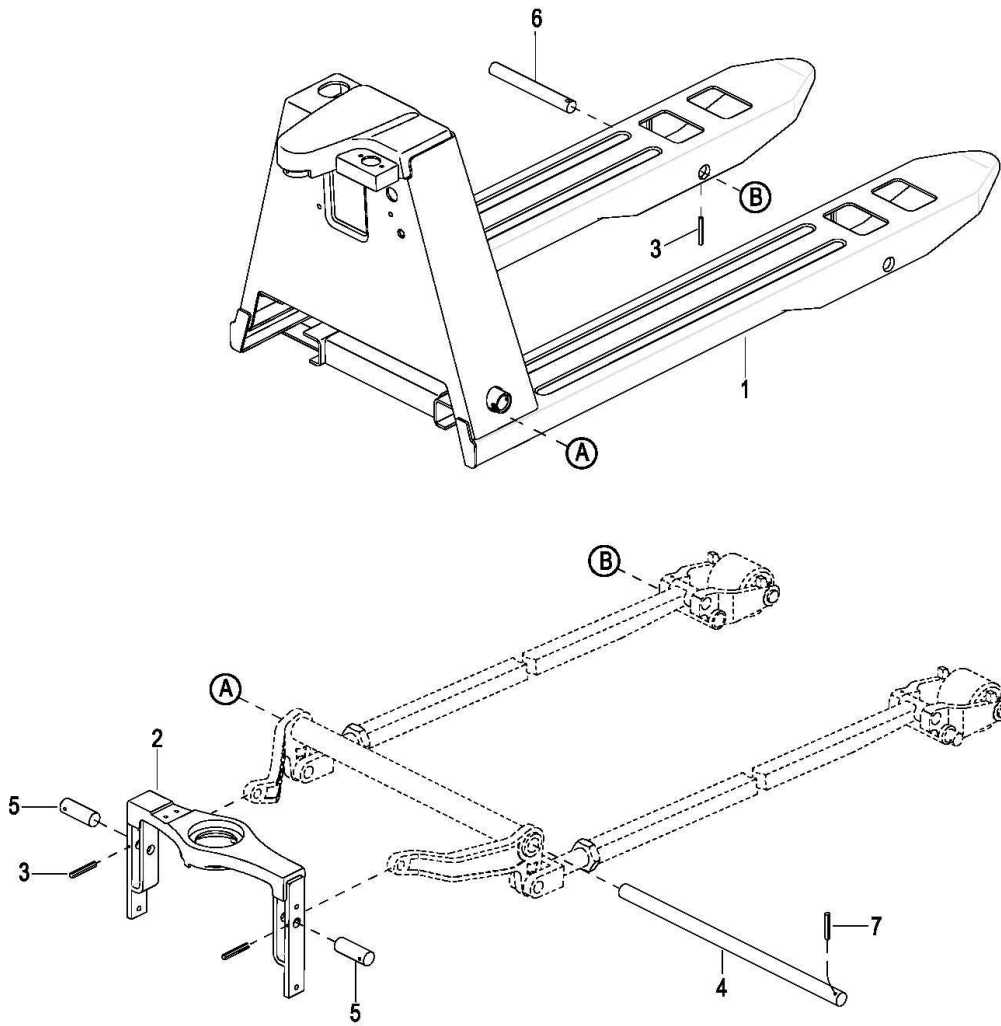
车身系统 (双轮)

Index	Part No.	Part Name	No.	Applied Date	Remark
序号	零件编号	零件名称	数量	适用日期	备注
1	See Form 1.1	Front Frame	1		前车架 见表 1.1
2	1121-120000-00	Back Frame	1		后车架
3	0000-001456-00	Round Pin $\phi 5 \times 35$	4		弹性圆柱销, 卷制
4	See Form 1.1	Long Shaft	1		长支撑轴 见表 1.1
5	1121-130002-00	Short Shaft	2		短销轴
6	1115-130004-0A	Shaft	2		轮架安装轴
7	0000-001333-00	Pin $\phi 5 \times 35$	1		弹性圆柱销, 卷制

Form 1.1

Frame Width (W)		Fork Length (L)		Long Shaft 长支撑轴编号 (Item 4 , Page 3)	Fork Frame 前车架编号 (Item 1 , Page 3)	Applied Date 适用日期
mm	in	mm	in			
560	22	1150	45	1121-130001-00	1122-110000-00-01	
		1220	48		1122-110000-00-02	
		1000	40		1122-110000-00-03	
		1070	42		1122-110000-00-04	
		915	36		1122-110000-00-05	
685	27	1150	45	1121-130001-10	1122-110000-a0-01	
		1220	48		1122-110000-a0-02	
		1000	40		1122-110000-a0-03	
		1070	42		1122-110000-a0-04	
		915	36		1122-110000-a0-05	

0102 Frame System (Single Wheel)

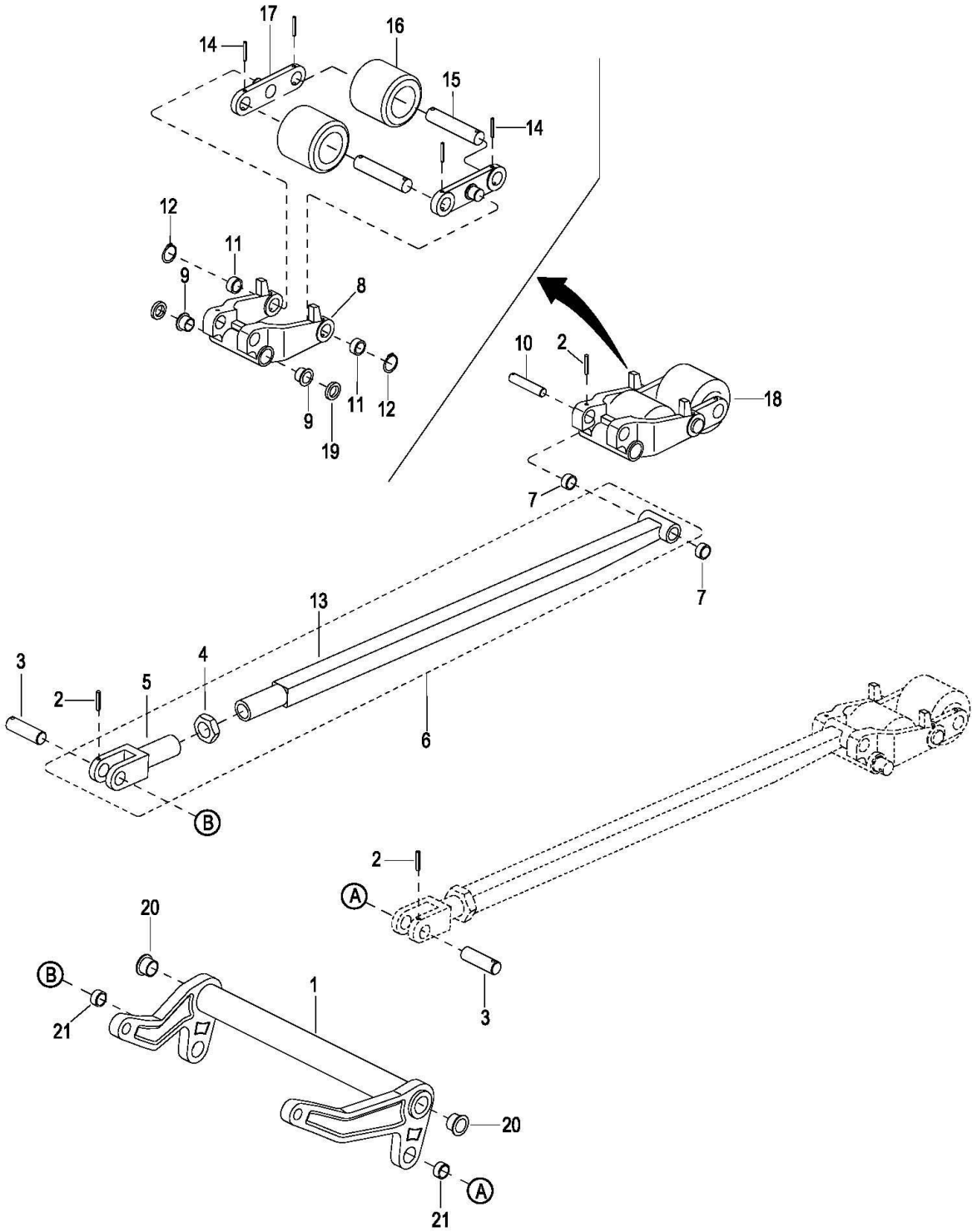


0102 Frame System (Single Wheel)

车身系统 (单轮)

Index	Part No.	Part Name	No.	Applied Date	Remark
序号	零件编号	零件名称	数量	适用日期	备注
1	See Form 1.2	Front Frame	1		前车架 见表 1.2
2	1121-120000-00	Back Frame	1		后车架
3	0000-001456-00	Round Pin $\phi 5 \times 35$	4		弹性圆柱销, 卷制
4	See Form 1.2	Long Shaft	1		长支撑轴 见表 1.2
5	1121-130002-00	Short Shaft	2		短销轴
6	1115-130004-0A	Shaft	2		轮架安装轴
7	0000-001333-00	Pin $\phi 5 \times 35$	1		弹性圆柱销, 卷制

0103 Connecting Link (Double Wheel)



0103 Connecting Link (Double Wheel)

连杆总成 (双轮)

Index	Part No.	Part Name		No.	Applied Date	Remark
序号	零件编号	零件名称		数量	适用日期	备注
1	See Form 1.3	Down Link	下连杆 见表 1.3	1		
2	0000-001456-00	Round Pin $\phi 5 \times 35$	卷制弹性圆柱销	4		
3	1121-130003-00	Shaft	下连杆销轴	2		
4	0000-000101-00	Nut M22 \times 1.5	螺母	2		
5	1121-132001-00	Connector	连接头	2		
6	See Form 1.4	Long Link	可调长连杆 见表 1.4	2		
7	0000-000907-00	Bushing 2020	自润滑轴套	4		
8	1115-130005-0C	Wheel Bracket	轮架	2		
9	0000-000908-00	Bushing 2015F	自润滑翻边轴套	4		
10	1115-130003-00	Shaft	长连杆安装轴	2		
11	0000-000809-00	Bushing 1815	自润滑轴套	4		
12	0000-000653-00	Snap Ring For Hole $\phi 18$	轴用弹簧挡圈	4		
13	See Form 1.4	Long rod	长杆 见表 1.4	2		
14	0000-001457-00	Round Pin $\phi 4 \times 35$	卷制弹性圆柱销	8		
15	1115-130007-0A	Shaft	承载轮销轴	4		
16	1115-133000-00	Load Wheel See 0105	双轮总成 见 0105	4		
17	1115-130006-0A	Splint	夹板	4		
18	1115-130005-0C-B	Wheel Bracket Assembly	轮架总成	2		
19	1115-130008-00	Washer	加高转子	2		
20	0000-001241-00	Bushing 2520F	自润滑翻边轴套	2		
21	0000-000011-00	Bushing 2015	自润滑轴套	2		

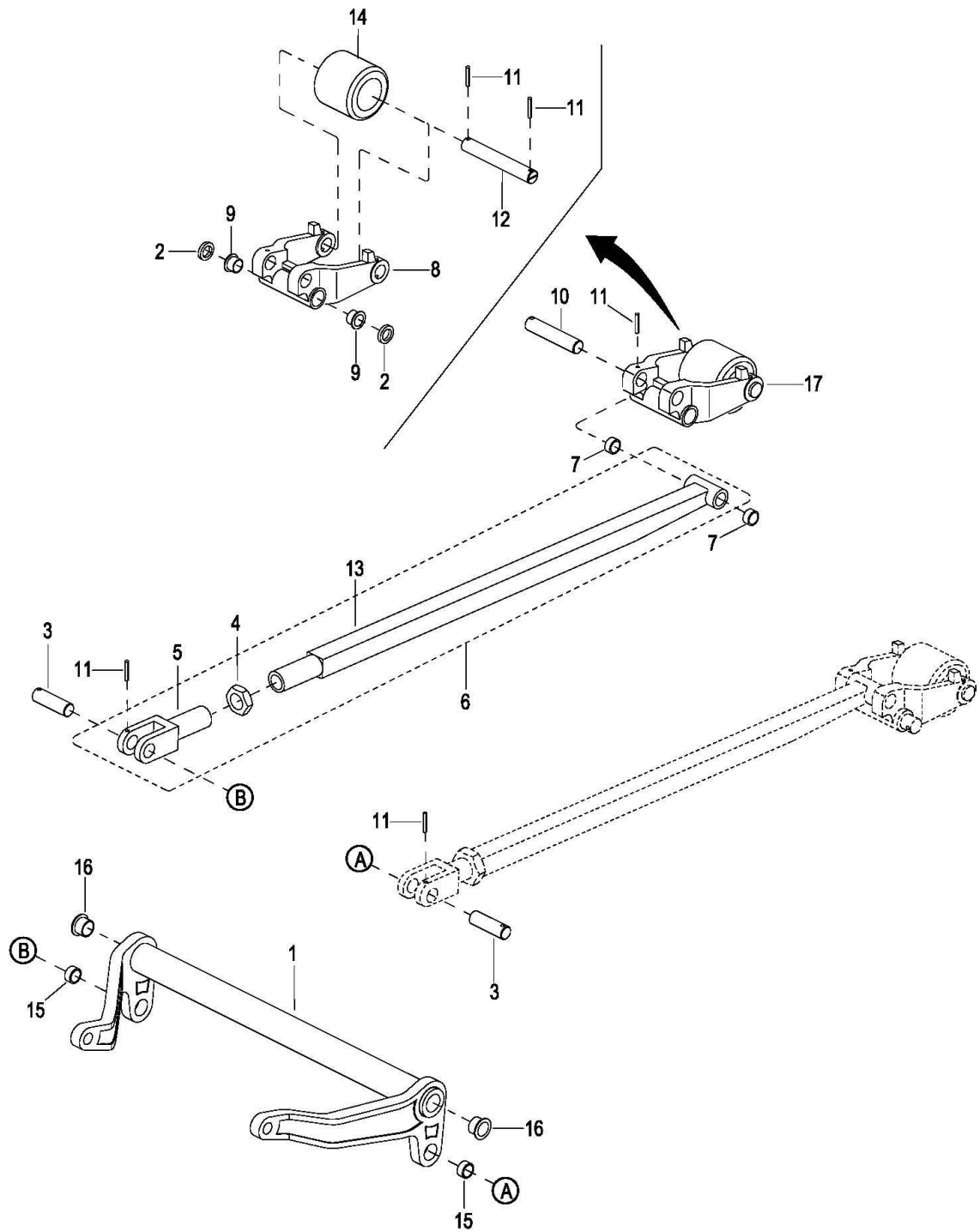
Form 1.3

Frame Width (W)		Part No. Of Down Link
车身宽度		
mm	in	(Item 1 , Page 7)
560	22	1121-131000-00
685	27	1121-131000-10

Form 1.4

Fork Length (L)		Part No. Of Long Link	Part No. Of Long Rod
叉脚长度			
mm	in	(Item 6 , Page 7 & 9)	(Item 13 , Page 7 & 9)
1150	45	1121-132000-00-01	1121-132200-00-01
1220	48	1115-132000-00-11	1115-132200-00-11
915	36	1115-132000-00-01	1115-132200-00-01
1000	40	1121-132000-00-04	1121-132200-00-04
1070	42	1121-132000-00-05	1121-132200-00-05

0104 Connecting Link (Single Wheel)

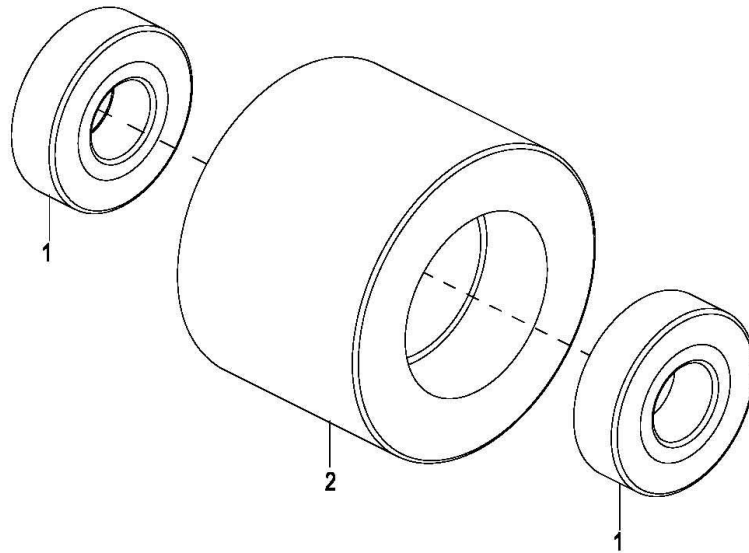


0104 Connecting Link (Single Wheel)

连杆总成 (单轮)

Index	Part No.	Part Name	No.	Applied Date	Remark
序号	零件编号	零件名称	数量	适用日期	备注
1	See Form 1.3	Down Link	1		On Page 7
2	1115-130008-00	Washer	4		
3	1121-130003-00	Shaft	2		
4	0000-000101-00	Nut M22×1.5	2		
5	1121-132001-00	Connector	2		
6	See Form 1.4	Long Link	2		On Page 7
7	0000-000907-00	Bushing 2020	4		
8	1115-130005-4A	Wheel Bracket	2		
9	0000-000908-00	Bushing 2015F	4		
10	1115-130003-00	Shaft	2		
11	0000-001456-00	Round Pin ø5×35	4		
12	1115-130007-40	Shaft	2		
13	See Form 1.4	Long rod	2		On Page 7
14	1115-133000-40	Load Wheel See 0106	2		单轮总成 见 0106
15	0000-000011-00	Bushing 2015	2		
16	0000-001241-00	Bushing 2520F	2		
17	1115-130005-4A-B	Wheel Bracket Assembly	2		

0105 Load Wheel (Double Wheel)

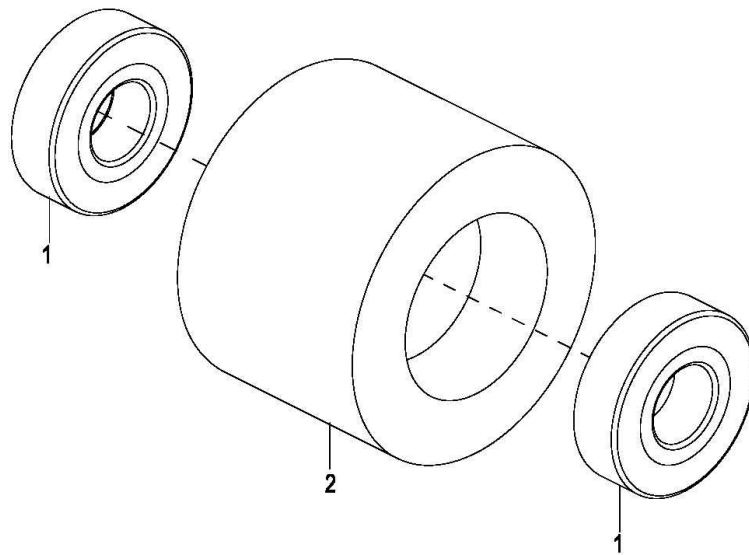


0105 Load Wheel (Double Wheel)

承载轮 (双轮)

Index	Part No.	Part Name	No.	Applied Date	Remark
序号	零件编号	零件名称	数量	适用日期	备注
1	01 0000-000020-00	Bearing 6204-2Z	2	-427171687	
	02 309000000004	Bearing6204-2RS	2	427171688-	EP20190104
2	1115-133002-00	PU Wheel	1		

0106 Load Wheel (Single Wheel)

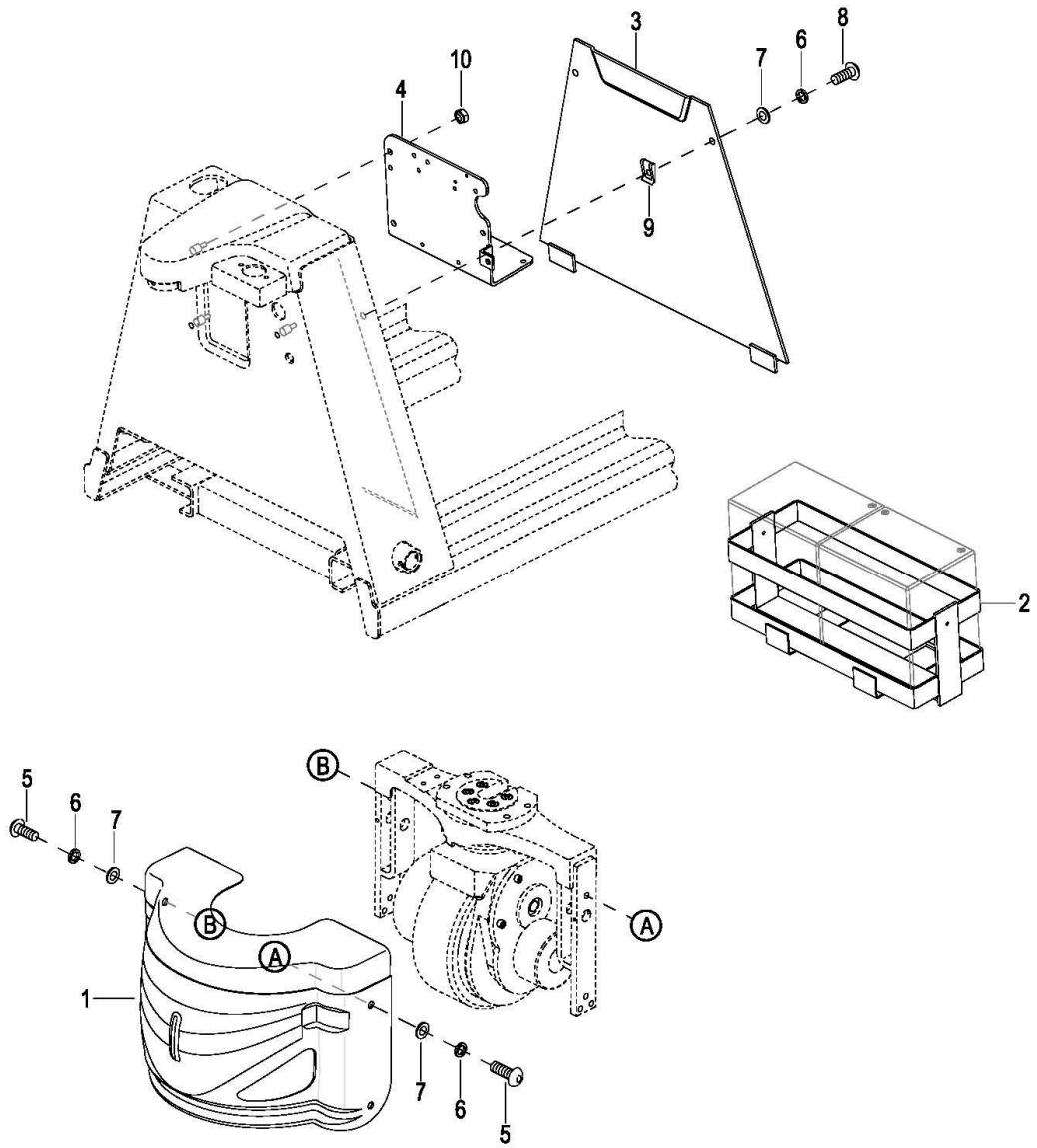


0106 Load Wheel (Single Wheel)

承载轮 (单轮)

Index	Part No.	Part Name		No.	Applied Date	Remark
序号	零件编号	零件名称		数量	适用日期	备注
1	01 0000-000020-00	Bearing 6204-2Z	轴承	2	-427171687	
	02 3090000000004	Bearing6204-2RS	轴承	2	427171688-	EP20190104
2	1115-133002-40	PU Wheel	PU 单轮	1		

0107 Cover Assembly



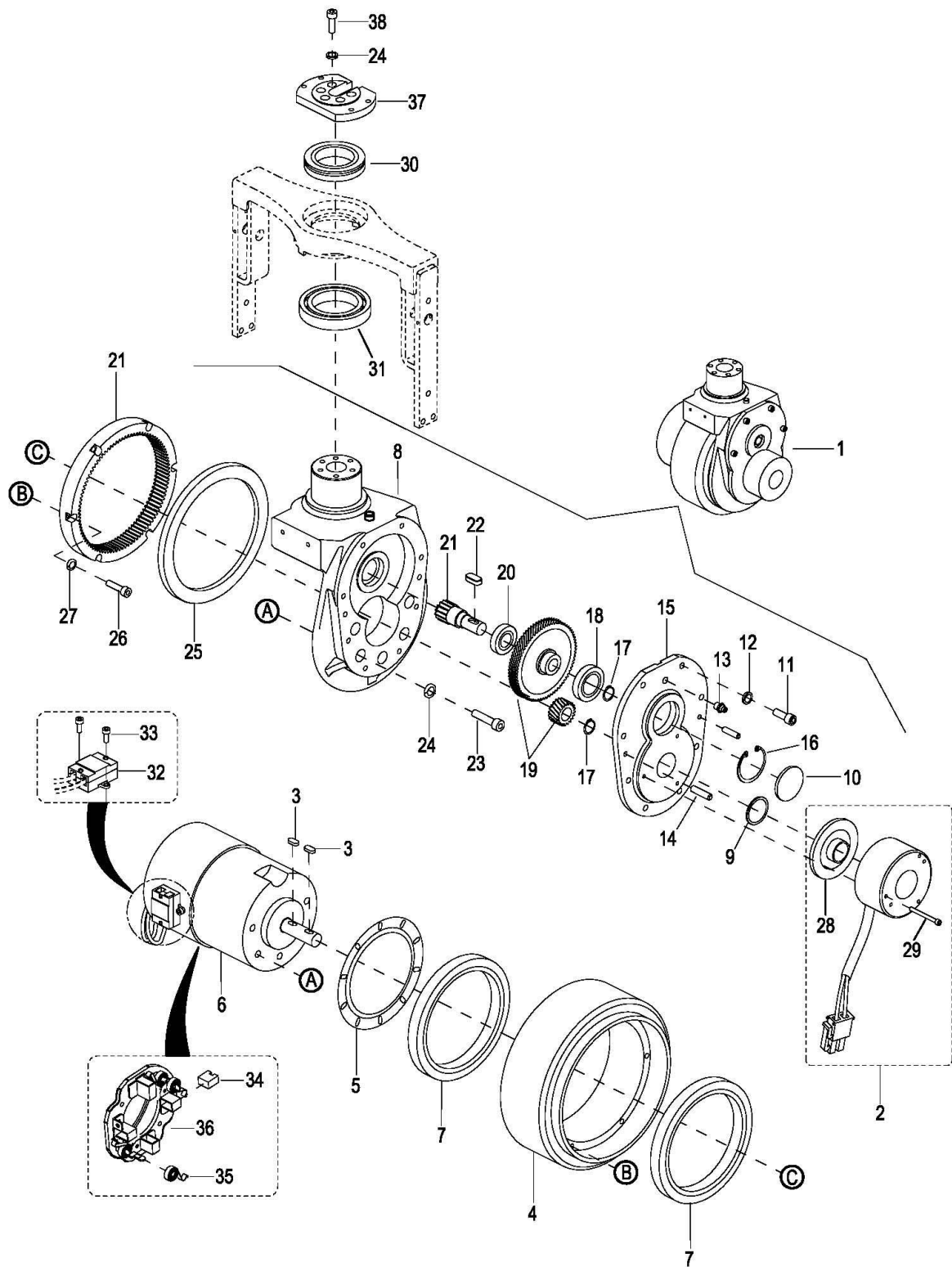
0107 Cover Assembly

外罩总成

Index	Part No.	Part Name		No.	Applied Date	Remark
序号	零件编号	零件名称		数量	适用日期	备注
1	01	1121-143000-00	Cover	外罩	1	
	02	1121-143000-0A	Cover	外罩	1	Superseded by EP20190724
2		1122-521000-00	Battery Rack	电瓶架	1	
3		1122-141000-00	Plate	前面板	1	
4		1122-510000-00	Bracket	电器安装板	1	
5		0000-000912-00	Screw M8×25	半圆头螺钉	4	
6		0000-000159-00	Lockwasher ø8	弹垫	6	
7		0000-000176-00	Flatwasher ø8	平垫	6	
8		0000-000700-00	Screw M8×16	螺钉	2	
9		1220-150005-00	Nut M8	夹片螺母	2	
10		0000-000923-00	Nut M6	锁紧螺母	3	

2000
Driving System
驱动系统

0201 Driving System

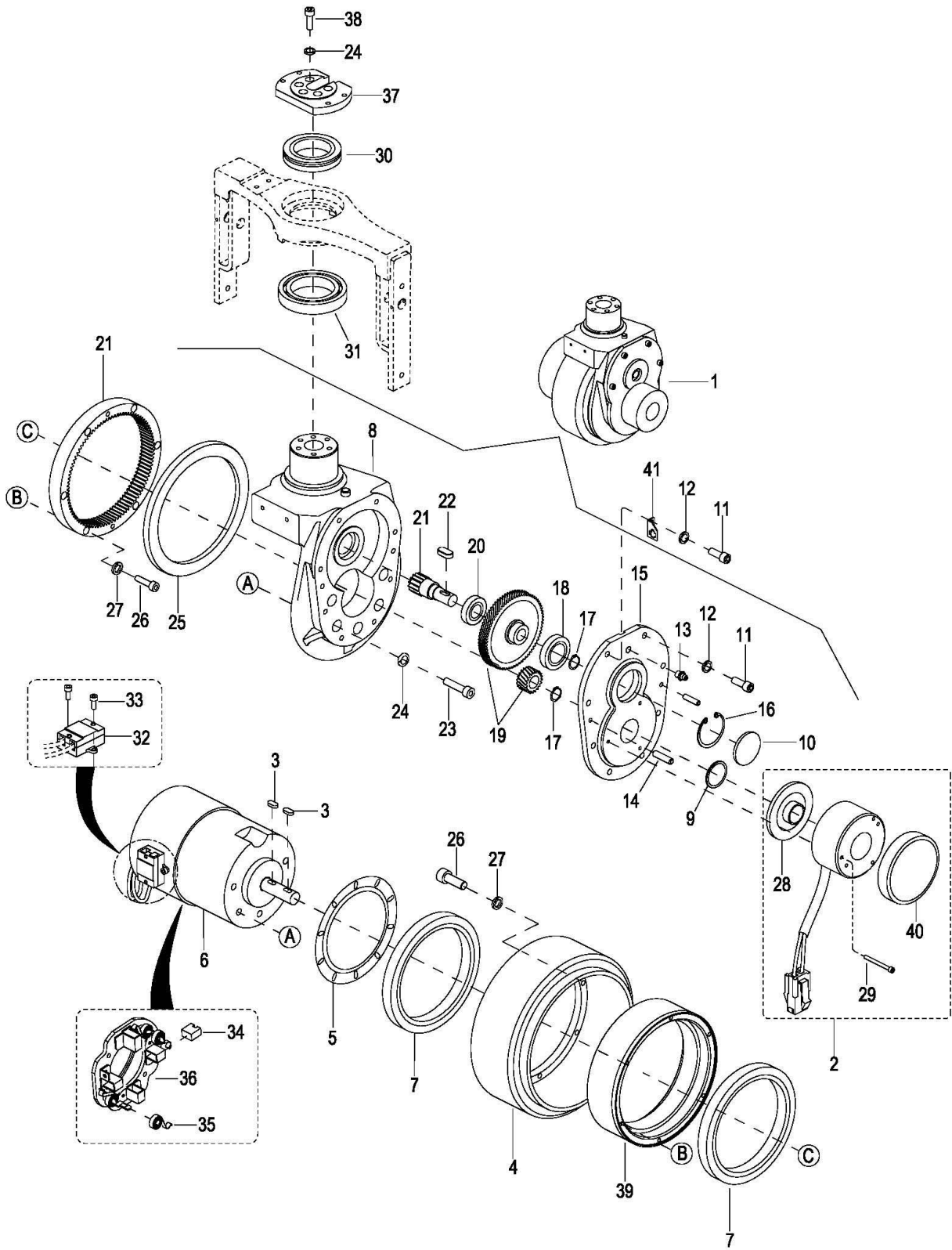


0201 Driving System

驱动系统

Index	Part No.	Part Name		No.	Applied Date	Remark
序号	零件编号	零件名称		数量	适用日期	备注
1	1121-200000-00	Driving Assembly	驱动单元总成	1	-426150000	Including Index 2—27
2	1115-520012-00	Brake Assembly	制动器总成	1		
3	0000-000662-00	Flat Key 5×5×12	平键	2		
4	1115-220000-00	Driving Wheel	驱动轮	1	-426150000	
5	1115-200010-00	Bearing Baffle	轴承挡板	1		
6	1115-250000-00	Motor	电机	1		
7	0000-000663-00	Bearing 61824-2RS	轴承	2		
8	1121-210001-00	Gear Case	箱体	1		
9	0000-000671-00	Oil Seal ø16×28×7	骨架油封	1		
10	1115-200007-00	Cap	闷盖	1		
11	0000-000386-00	Scrw M6×20	螺钉	8		
12	0000-000056-00	Lockwasher ø6	弹垫	8		
13	0000-000013-00	Grease Fitting M8	直通式压注油杯	1		
14	0000-000704-00	Pin ø6×20	定位销	2		
15	1115-200001-00	Gear Cover	箱盖	1		
16	0000-000658-00	Snap Ring For Hole ø42	孔用弹性挡圈	1		
17	0000-000659-00	Snap Ring ø15	挡圈	2		
18	0000-000667-00	Bearing 61905Z	轴承	1		
19	1115-GSX-10	Gear Kit	齿轮修理包	1		The kit includes 2 gears (Pos.19)
20	0000-000680-00	Bearing 16003Z	轴承	1		
21	1115-GSX-20	Gear Kit	齿轮修理包	1		The kit includes 2 gears (Pos.21)
22	0000-000660-00	Key 5×5×18	平键	1		
23	0000-000026-00	Screw M8×30	螺钉	5		
24	0000-000159-00	Lockwasher ø8	弹垫	10		
25	0000-000670-00	Oil Seal ø155×172×10	骨架油封	1	-426150000	
26	0000-000661-00	Screw M5×20	螺钉	6		
27	0000-000206-00	Lockwasher ø5	弹垫	6		
28	1115-240001-00	Brake lining	刹车片	1		
29	0000-000665-00	Screw M4×45	螺钉	3		
30	0000-001230-00	Bearing 51113	推力球轴承	1		
31	0000-001231-00	Bearing 6013-Z	轴承	1		
32	1115-231000-00	Bracket	电机线安装座	1		
33	0000-000004-00	Screw M5×12	螺钉	2		
34	1115-250001-00	Brush	碳刷	4		
35	1115-250002-00	Brush Spring	碳刷弹簧	4		
36	1115-250003-00	Holder Brush	碳刷架	1		
37	1121-200001-00	Connecting Plate	连接板	1		
38	0000-000151-00	Screw M8×25	螺钉	5		

020101 Driving System



020101 Driving System

驱动系统

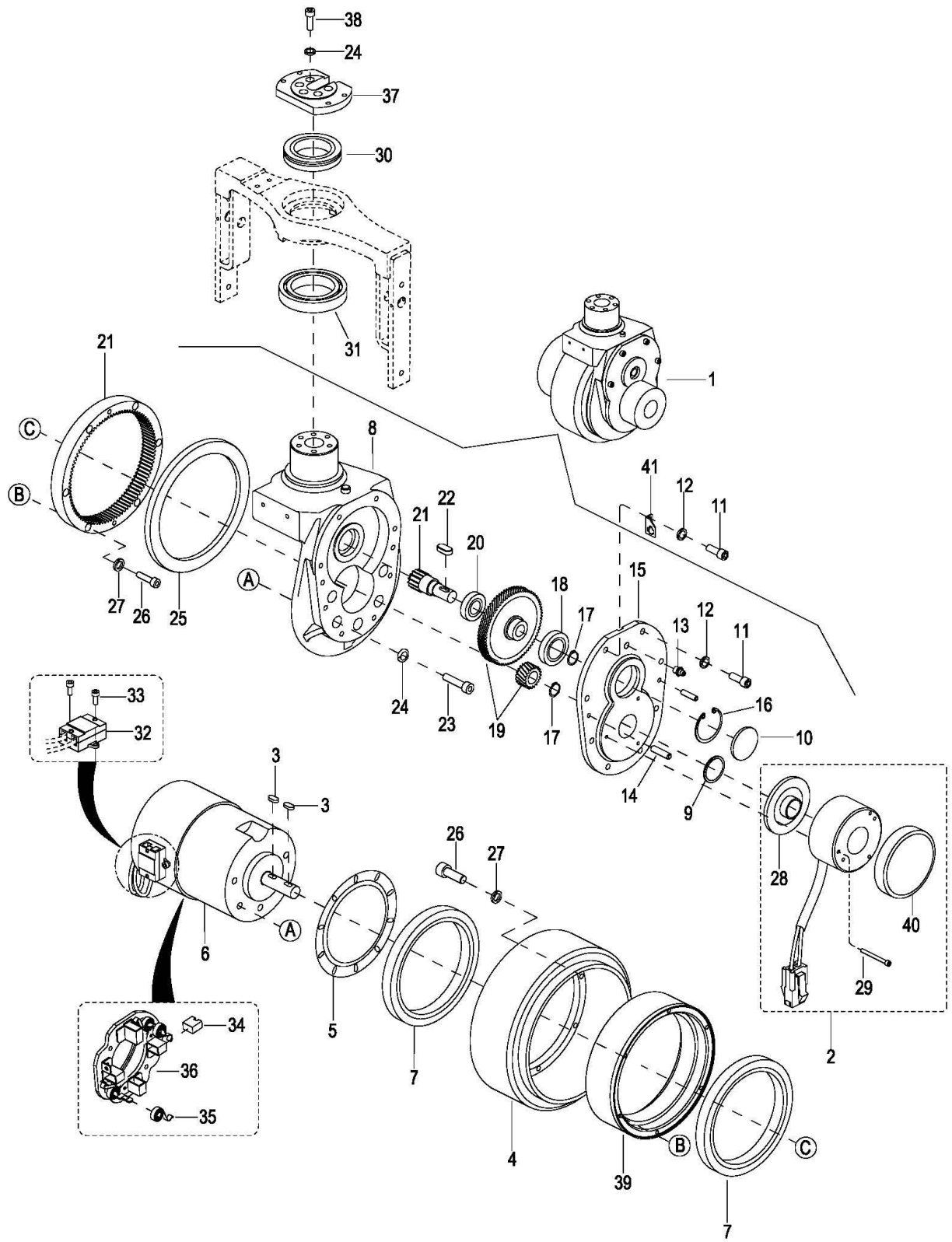
Index	Part No.	Part Name		No.	Applied Date	Remark
序号	零件编号	零件名称		数量	适用日期	备注
1	1121-200000-A0	Driving Assembly	驱动单元总成	1	426150001-427202925	Including Index 2—27
2	01 1115-520012-00	Brake Assembly	制动器总成	1	-426200143	
	02 1115-520012-0A	Brake Assembly	制动器总成	1	426200144-427190826	
	03 1115-520012-10	Brake Assembly	制动器总成	1	427190827-	EP20181228
3	0000-000662-00	Flat Key 5×5×12	平键	2		
4	1115-220000-A0	Driving Wheel	驱动轮	1	426150001-	
5	1115-200010-00	Bearing Baffle	轴承挡板	1		
6	1115-250000-00	Motor	电机	1		
7	0000-000663-00	Bearing 61824-2RS	轴承	2		
8	1121-210001-00	Gear Case	箱体	1	-427202925	
9	0000-000671-00	Oil Seal $\phi 16 \times 28 \times 7$	骨架油封	1		
10	1115-200007-00	Cap	闷盖	1		
11	0000-000386-00	Screw M6×20	螺钉	14		
12	0000-000056-00	Lockwasher $\phi 6$	弹垫	14		
13	0000-000013-00	Grease Fitting M8	直通式压注油杯	1		
14	0000-000704-00	Pin $\phi 6 \times 20$	定位销	2		
15	1115-200001-00	Gear Cover	箱盖	1		
16	0000-000658-00	Snap Ring For Hole $\phi 42$	孔用弹性挡圈	1		
17	0000-000659-00	Snap Ring $\phi 15$	挡圈	2		
18	0000-000667-00	Bearing 61905Z	轴承	1		
19	1115-GSX-10	Gear Kit	齿轮修理包	1	-427202925	The kit includes 2 gears (Pos.19)
20	0000-000680-00	Bearing 16003Z	轴承	1	-427202925	
21	1115-GSX-20	Gear Kit	齿轮修理包	1	-427202925	The kit includes 2 gears (Pos.21)
22	0000-000660-00	Key 5×5×18	平键	1		
23	0000-000026-00	Screw M8×30	螺钉	5		
24	0000-000159-00	Lockwasher $\phi 8$	弹垫	10		
25	0000-001788-00	Oil Seal $\phi 155 \times 173 \times 10$	骨架油封	1	426150001-	
26	01 0000-000661-00	Screw M5×20	螺钉	12		replaced by #302001000091
	02 302001000091	Screw M5×25	螺钉	6		
27	0000-000206-00	Lockwasher $\phi 5$	弹垫	6		
28	1115-240001-00	Brake lining	刹车片	1		
29	01 0000-000665-00	Screw M4×45	螺钉	3	-426200143	
	02 1115-240003-0A	Screw M4×40	螺钉	3	426200144-	
30	0000-001230-00	Bearing 51113	推力球轴承	1		
31	0000-001231-00	Bearing 6013-Z	轴承	1		
32	1115-231000-00	Bracket	电机线安装座	1		
33	0000-000004-00	Screw M5×12	螺钉	2		
34	1115-250001-00	Brush	碳刷	4		
35	1115-250002-00	Brush Spring	碳刷弹簧	4		
36	1115-250003-00	Holder Brush	碳刷架	1		

020101 Driving System

驱动系统

Index	Part No.	Part Name		No.	Applied Date	Remark
序号	零件编号	零件名称		数量	适用日期	备注
37	1121-200001-00	Connecting Plate	连接板	1		
38	0000-000151-00	Screw M8×25	螺钉	5		
39	1115-200001-A0	Inner rim	内轮圈	1	426150001-	
40	1115-240002-0A	Scraper Seal	防尘圈	1	426200144-	
41	1115-200020-00	Plate	接插件固定板	1	427190827-	EP20181228

020102 Driving System



020102 Driving System

驱动系统

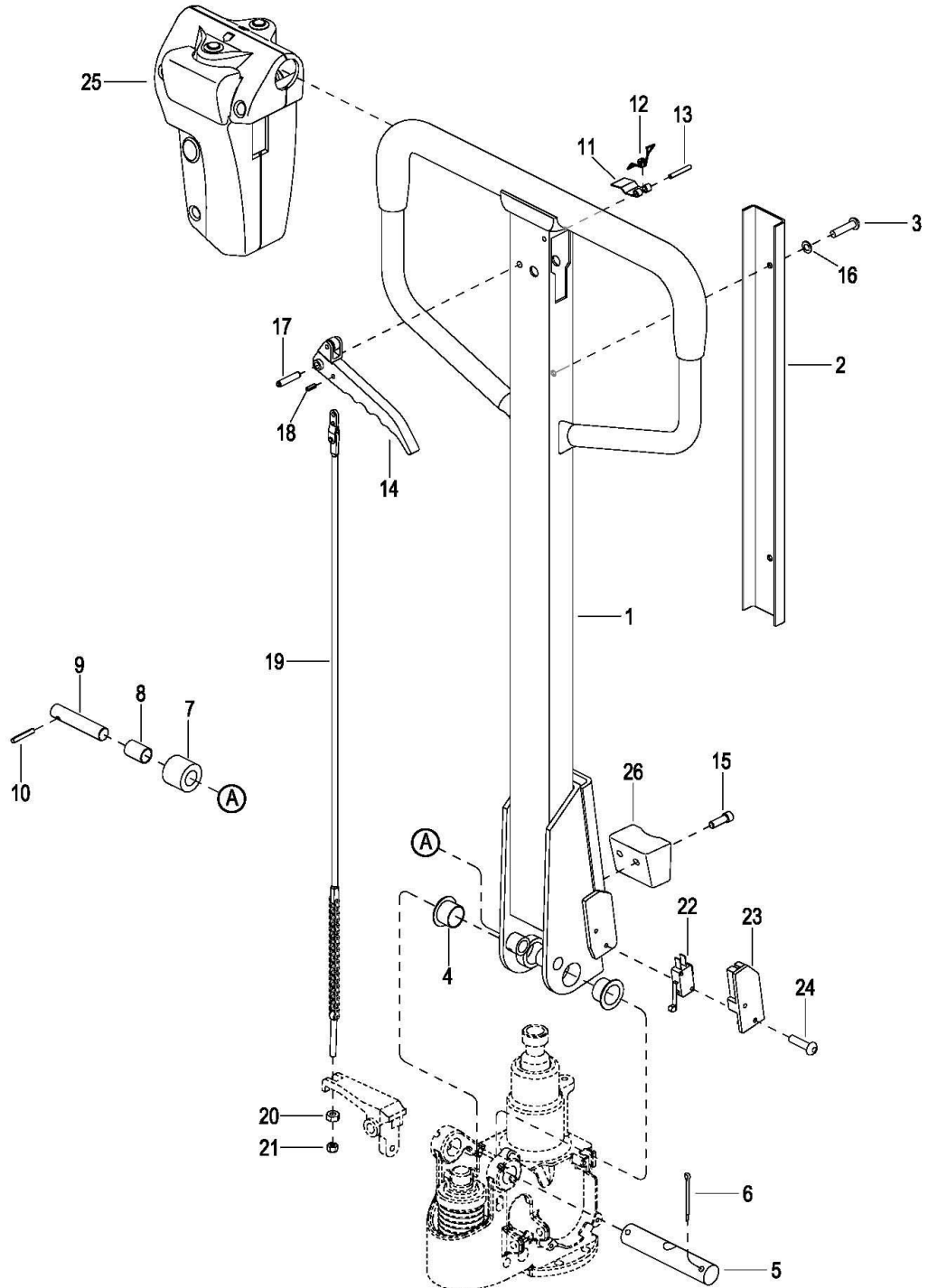
Index 序号	Part No. 零件编号	Part Name 零件名称		No. 数量	Applied Date 适用日期	Remark 备注
1	1121-200000-03	Driving Assembly	驱动单元总成	1	427202926-	Including Index 2—27, EP20190221
2	01 1115-520012-00	Brake Assembly	制动器总成	1	-426200143	
	02 1115-520012-0A	Brake Assembly	制动器总成	1	426200144-427190826	
	03 1115-520012-10	Brake Assembly	制动器总成	1	427190827-	EP20181228
3	0000-000662-00	Flat Key 5×5×12	平键	2		
4	1115-220000-A0	Driving Wheel	驱动轮	1	426150001-	
5	1115-200010-00	Bearing Baffle	轴承挡板	1		
6	1115-250000-00	Motor	电机	1		
7	0000-000663-00	Bearing 61824-2RS	轴承	2		
8	1121-210001-0E	Gear Case	箱体	1	427202926-	EP20190221
9	0000-000671-00	Oil Seal ø16×28×7	骨架油封	1		
10	1115-200007-00	Cap	闷盖	1		
11	0000-000386-00	Screw M6×20	螺钉	14		
12	0000-000056-00	Lockwasher ø6	弹垫	14		
13	0000-000013-00	Grease Fitting M8	直通式压注油杯	1		
14	0000-000704-00	Pin ø6×20	定位销	2		
15	1115-200001-00	Gear Cover	箱盖	1		
16	0000-000658-00	Snap Ring For Hole ø42	孔用弹性挡圈	1		
17	0000-000659-00	Snap Ring ø15	挡圈	2		
18	0000-000667-00	Bearing 61905Z	轴承	1		
19	1121-GB03-00	Gear Kit (z1/z2=20/72)	齿轮修理包	1	427202926-	The kit includes 2 gears (Pos.19), EP20190221
20	309001000042	Bearing 6203	轴承	1	427202926-	EP20190221
21	1121-GB03-10	Gear Kit (z1/z2=14/96)	齿轮修理包	1	427202926-	The kit includes 2 gears (Pos.21), EP20190221
22	0000-000660-00	Key 5×5×18	平键	1		
23	0000-000026-00	Screw M8×30	螺钉	5		
24	0000-000159-00	Lockwasher ø8	弹垫	10		
25	0000-001788-00	Oil Seal ø155×173×10	骨架油封	1	426150001-	
26	01 0000-000661-00	Screw M5×20	螺钉	6		replaced by #302001000091
	02 302001000091	Screw M5×25	螺钉	6		
27	0000-000206-00	Lockwasher ø5	弹垫	6		
28	1115-240001-00	Brake lining	刹车片	1		
29	01 0000-000665-00	Screw M4×45	螺钉	3	-426200143	
	02 1115-240003-0A	Screw M4×40	螺钉	3	426200144-	
30	0000-001230-00	Bearing 51113	推力球轴承	1		
31	0000-001231-00	Bearing 6013-Z	轴承	1		
32	1115-231000-00	Bracket	电机线安装座	1		
33	0000-000004-00	Screw M5×12	螺钉	2		
34	1115-250001-00	Brush	碳刷	4		
35	1115-250002-00	Brush Spring	碳刷弹簧	4		
36	1115-250003-00	Holder Brush	碳刷架	1		

020102 Driving System**驱动系统**

Index	Part No.	Part Name		No.	Applied Date	Remark
序号	零件编号	零件名称		数量	适用日期	备注
37	1121-200001-00	Connecting Plate	连接板	1		
38	0000-000151-00	Screw M8×25	螺钉	5		
39	1115-200001-A0	Inner rim	内轮圈	1	426150001-	
40	1115-240002-0A	Scraper Seal	防尘圈	1	426200144-	
41	1115-200020-00	Plate	接插件固定板	1	427190827-	EP20181228

3000
Operating Control System
操作系统

0301 Operating Control System

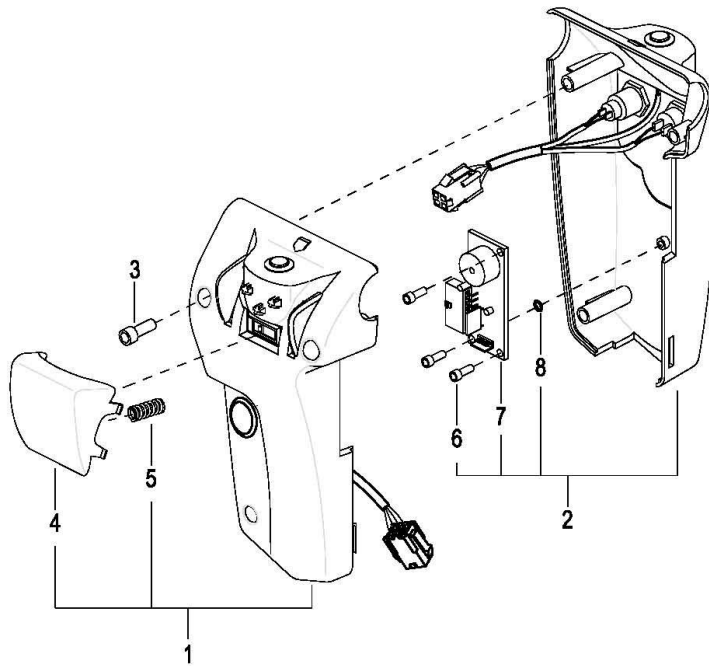


0301 Operating Control System

操作系统

Index	Part No.	Part Name	No.	Applied Date	Remark
序号	零件编号	零件名称	数量	适用日期	备注
1	1121-320000-00	Control Handle	1		手柄
2	1121-300001-00	Groove	1		压线槽
3	0000-000179-00	Screw M6×10	2		螺钉
4	0000-000908-00	Bushing 2015F	2		自润滑翻边轴套
5	1121-300004-00	Shaft	1		销轴
6	0000-001232-10	Cotter Pin ø4×50	2		开口销
7	1121-300003-00	Roller	1		压轮
8	0000-001242-10	Bushing 1220	1		自润滑轴套
9	1121-300002-00	Shaft	1		压轮轴
10	0000-001233-10	Round Pin ø4×20	1		弹性圆柱销
11	1121-330001-00	Leaf Spring	1		弹簧片
12	1121-330002-00	Torsional Spring	1		扭簧
13	0000-000679-00	Round Pin ø4×30	1		弹性圆柱销
14	1121-330004-00-B	Knob	1		捏手组件
15	0000-000077-00	Screw M6×12	2		螺钉
16	0000-000380-00	Flatwasher ø6	2		平垫
17	0000-001235-10	Round Pin ø6×30	1		弹性圆柱销
18	0000-001236-10	Round Pin ø4×12	1		弹性圆柱销
19	1121-330006-00-B	Rod	1		拉杆
20	0000-000108-00	Nut M6	1		螺母
21	0000-000923-00	Nut M6	1		锁紧螺母
22	1115-500017-00	Limit Switch	1		上升限位开关
23	1115-500014-00	Bracket	1		限位开关安装件
24	0000-001238-00	Screw M3×16	2		螺钉
25	1121AA-310000-00-B	Control Pod Assembly	1	See0302	手柄头总成 见 0302
26	1121-300005-00	Limiting Block	1		限位块

0302 Control Pod Assembly



0302 Control Pod Assembly

操作手柄头总成

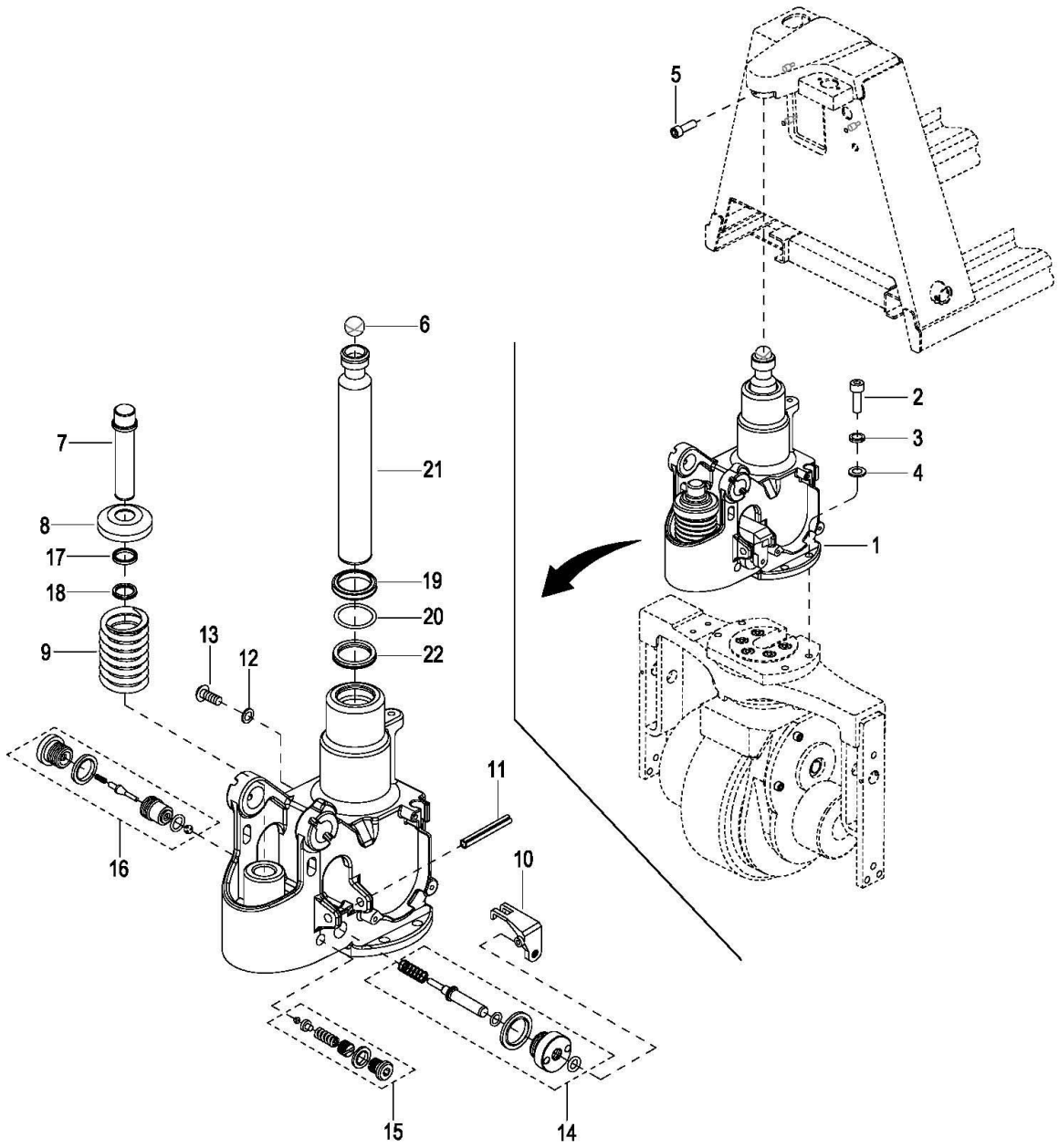
Index	Part No.	Part Name	No.	Applied Date	Remark
序号	零件编号	零件名称	数量	适用日期	备注
1	1121AA-310002-00-B	Cover	1		
2	1121AA-310001-00-B	Cap	1		
3	0000-000004-00	Screw M5×12	3		
4	1121-310003-00	Button Reverser Cover	1		
5	1121-310004-00	Spring	1		
6	0000-001243-00	Screw M3×6	3		
7	1121-520013-00	Integrated module	1		
8	0000-001133-00	O-Ring ø3.15×1.8	3		

4000

Hydraulic System

液压系统

0401 Hydraulic System



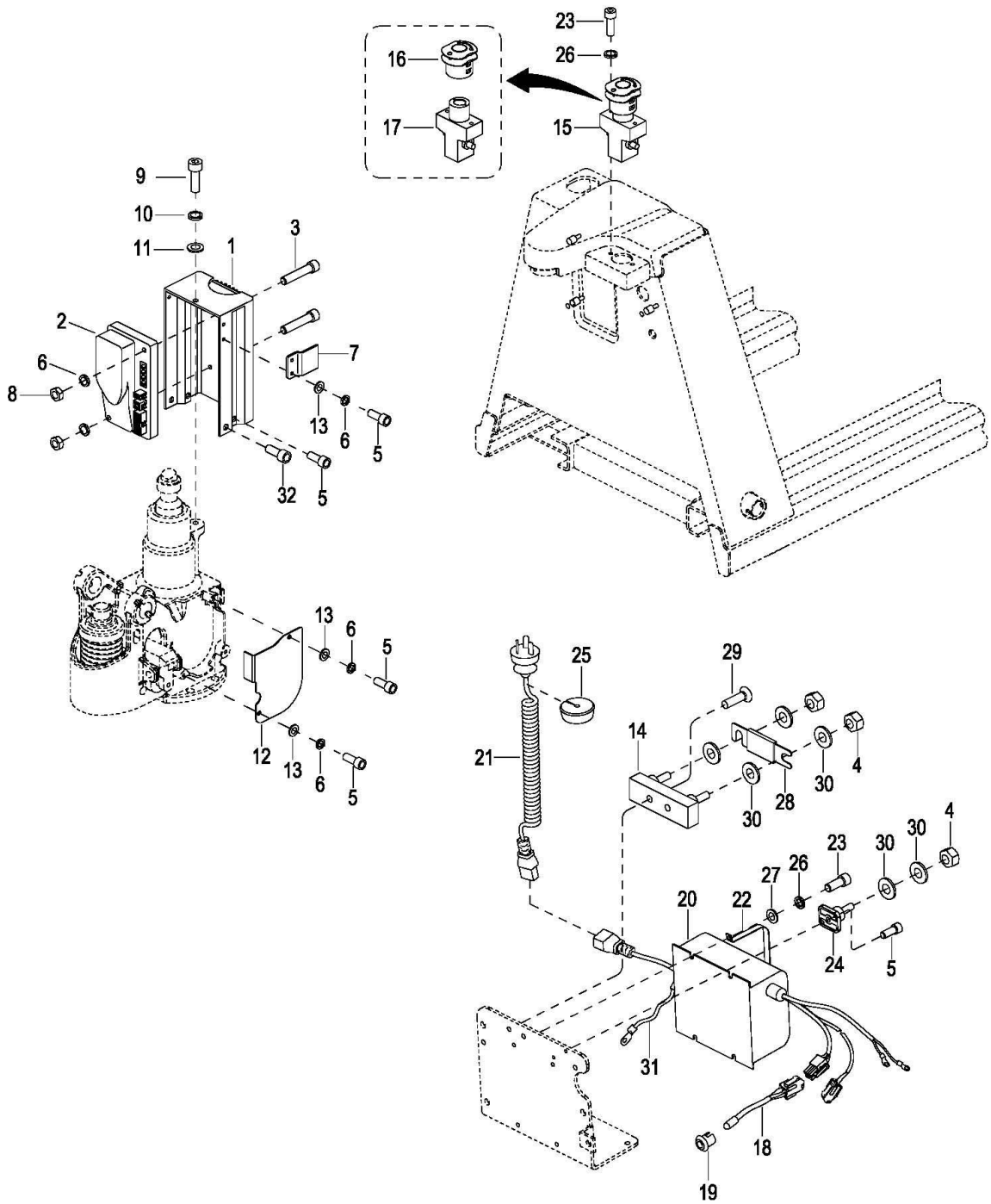
0401 Hydraulic System

液压系统

Index	Part No.	Part Name	No.	Applied Date	Remark
序号	零件编号	零件名称	数量	适用日期	备注
1	01 1122-410000-00	Hydraulic Assembly	1	-427190985	Including Index 6—22
	02 1121-410000-AB	Hydraulic Assembly	1	427190986-	EP20190104-3
2	0000-000151-00	Screw M8×25	4		
3	0000-000159-00	Lockwasher ø8	4		
4	0000-000176-00	Flatwasher ø8	4		
5	0000-000077-00	Screw M6×12	1		
6	1121-410001-00	Steel Ball	1		
7	1122-410001-00	Pressure Bar	1		
8	1122-410002-00	Spring Cover	1		
9	1122-410003-00	Spring	1		
10	1122-410004-00	Pressure Release Lever	1		
11	0000-001606-10	Pin 8×50	1		
12	1122-410005-00	Ring ø7.5×3	1		
13	0000-001607-10	Screw M8×12	1		
14	1122-410006-00	Unloading Valve	1		
15	1122-410007-00	Relief Valve	1		
16	1122-410008-00	Control Valve	1		
17	1122-410009-00	Ring Wiper 18	1		
18	1122-410010-00	YX-seal 18	1		
19	1122-410011-00	Ring Wiper 32	1		
20	1122-410012-00	O-ring 32×3.55	1		
21	1122-410013-00	Piston Rod	1		
22	1122-410014-00	seal 32	1		
KIT	1122-ZZG-0A	Seal Kit For Hydraulic Assembly (include item17,18,19,20,22)	1		起升泵修理包（包含零件 17、 18、19、20、22）

5000
Electrical System
电气系统

0501 Electrical System

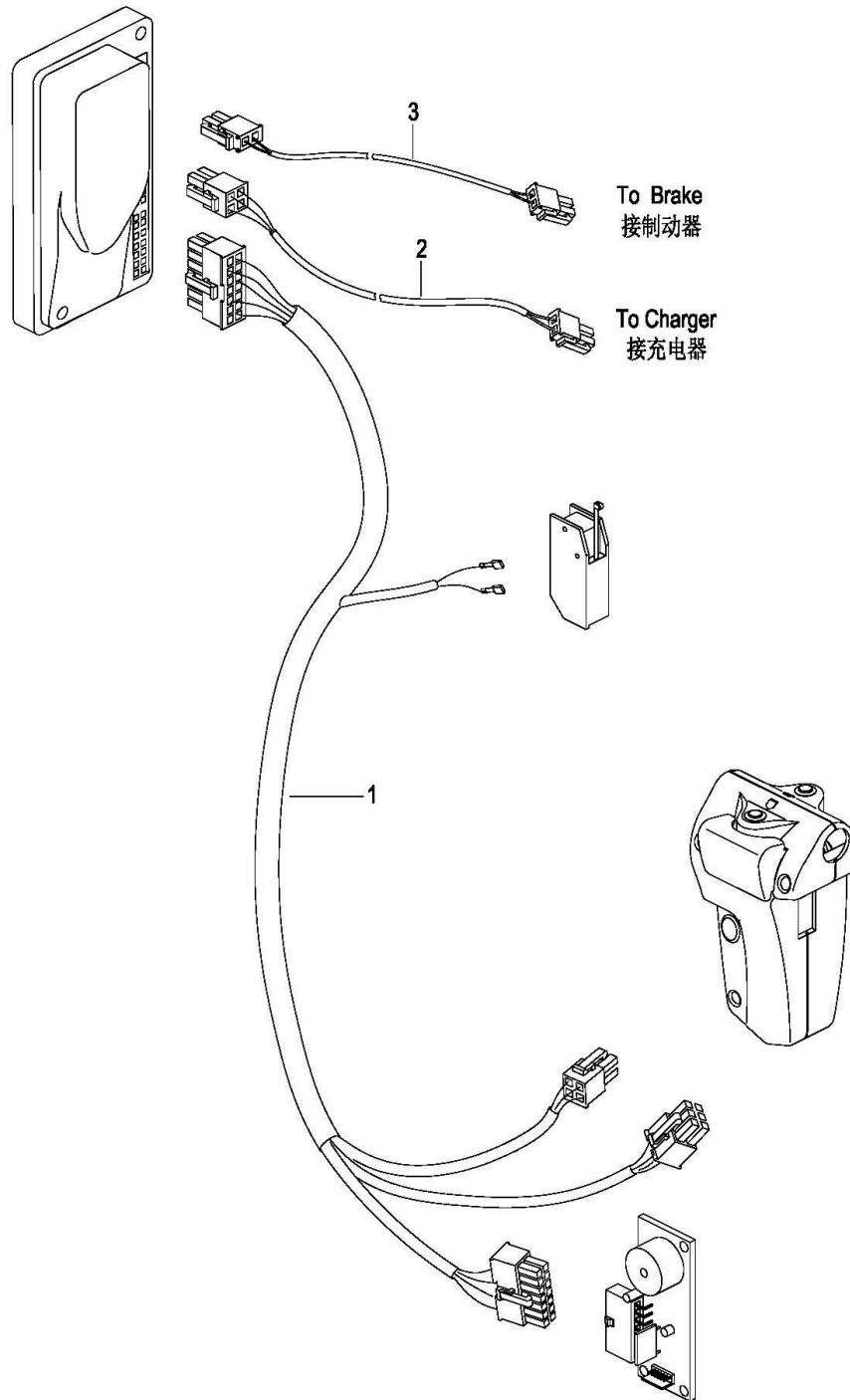


0501 Electrical System

电气系统

Index	Part No.	Part Name	No.	Applied Date	Remark
序号	零件编号	零件名称	数量	适用日期	备注
1	01 1121-142000-0B	Controller Cover	1	-427190985	
	02 1121-142000-0E	Controller Cover	1	427190986 -	EP20190104-2
2	1115-510004-00-N0	Controller	1		
3	0000-000121-00	Screw M4×35	2		
4	0000-000196-00	Nut M8	3		
5	0000-000088-00	Screw M4×8	6		
6	0000-000122-00	Lockwasher ø4	6		
7	1121-500002-00	Plate	1		
8	0000-000139-00	Nut M4	2		
9	0000-000077-00	Screw M6×12	1		
10	0000-000056-00	Lockwasher ø6	1		
11	0000-000380-00	Flatwasher ø6	1		
12	1122-140001-00	Side Cover	1		
13	0000-000702-00	Flatwasher ø4	4		
14	1120-540001-00-B	Fuse Stand	1		
15	1114-540000-00	Emergency Stop Switch	1		
16	1114-540001-00	Switch Button	1		
17	1114-540002-00	Emergency Stop Switch Seat	1		
18	1121-520007-00	LED Lamp	1		
19	1115-510009-00	Lamp Holder	1		
20	1122-520004-00	Charger Assembly 5A	1		Including #31
21	1115-500006-00	Charger Cable EUROPE	1		For EUROPE
21	1115-500006-10	Charger Cable USA	1		For USA
21	1115-500006-20	Charger Cable AUS	1		For AUS
21	1115-500006-30	Charger Cable END	1		For END
21	1115-500006-40	Charger Cable JAPAN	1		For JAPAN
21	1115-500006-50	Charger Cable CHINA	1		For CHINA
21	1115-500006-60	Charger Cable CH	1		For CH
22	1115-500009-00	Charger Hoop	2		
23	0000-000004-00	Screw M5×12	6		
24	1220-500005-00	Terminal	1		
25	1115-120002-00	Charger Cap	1		
26	0000-000206-00	Lockwasher ø5	6		
27	0000-000390-00	Flatwasher ø5	4		
28	1115-510003-00	Fuse 100A	1		
29	0000-000126-00	Screw M 6×16	2		
30	0000-000176-00	Flatwasher ø8	6		
31	1115-520021-00	Ground Line	1	426191250-	
32	0000-000004-00	Screw M5x12	2	427190986-	EP20190104-2

0502 Wire Harness Assembly

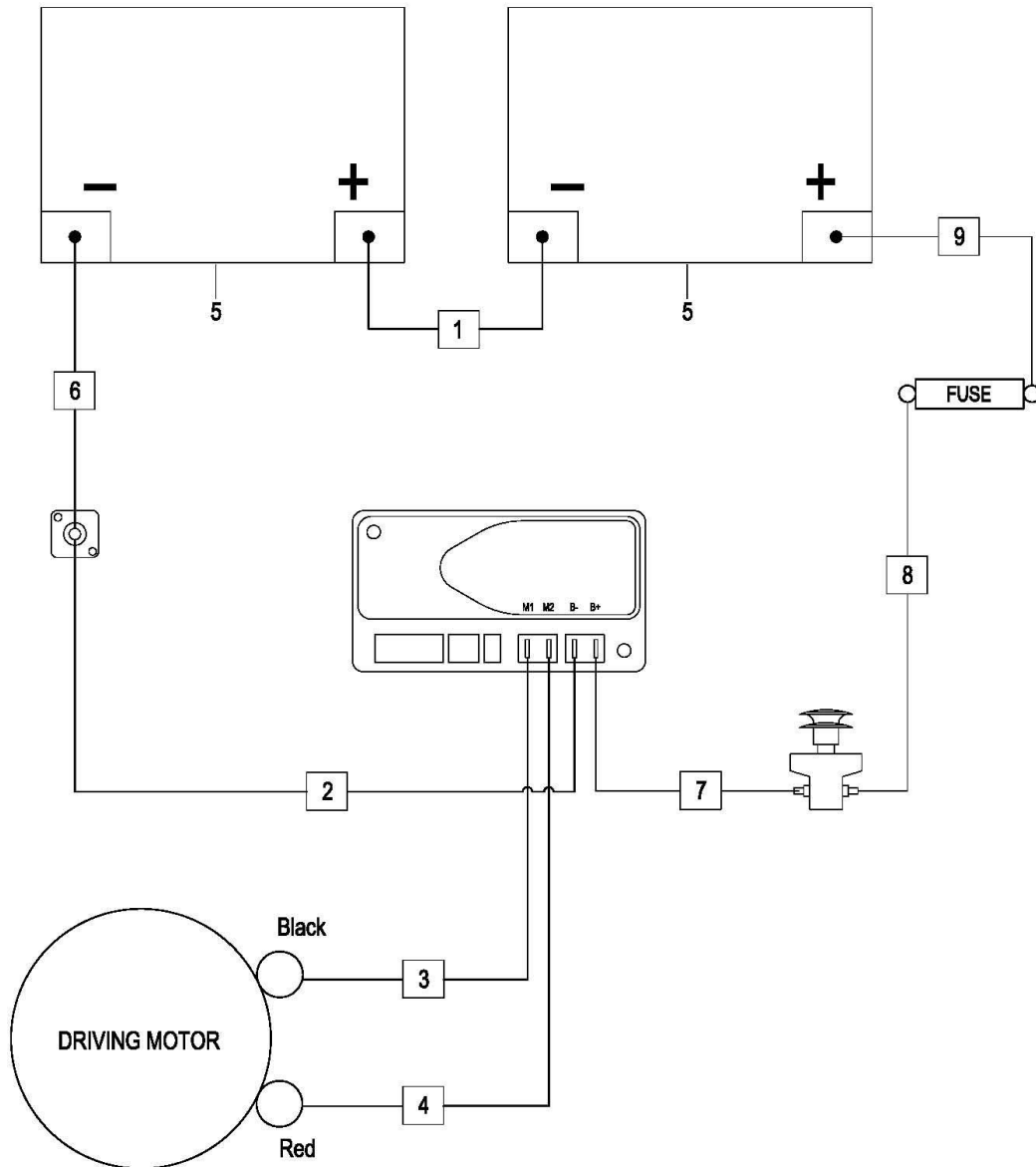


0502 Wire Harness Assembly

线束总成

Index	Part No.	Part Name		No.	Applied Date	Remark
序号	零件编号	零件名称		数量	适用日期	备注
1	1122AA-520001-00	Master Wire Harness	主线束	1		
2	1122-520008-00	Changer Wire Harness	充电器转接线束	1		
3	01 1121-520006-0A	Brake Wire Harness	制动器转接线束	1	-427190826	
	02 1121-520006-0D	Brake Wire Harness	制动器转接线束	1	427190827-	EP20181228

0503 Cable Assembly



0503 Cable Assembly

电缆总成

Index	Part No.	Part Name		No.	Applied Date	Remark
序号	零件编号	零件名称		数量	适用日期	备注
1	1121-530002-00	Battery Connector Cable	电瓶间电缆	1		
2	1122-530001-00	B- Cable	控制器负极电缆	1		
3	1121-530003-00	M1 Cable	M1 电缆	1		
4	1121-530004-00	M2 Cable	M2 电缆	1		
5	01 1121-500001-00	Battery	电瓶	2		30Ah, superseded by 1121-500001-0A
	02 1121-500001-0A	Battery	电瓶	2		30Ah
6	1122-530002-00	BATT- Cable	电瓶负极电缆	1		
7	1122-531001-00	E-C Cable	急停开关到控制器电缆	1		
8	1122-531002-00	E-F Cable	急停开关到保险丝电缆	1		
9	1121-530005-00	Fuse-Battery Cable	保险丝到电瓶电缆	1		